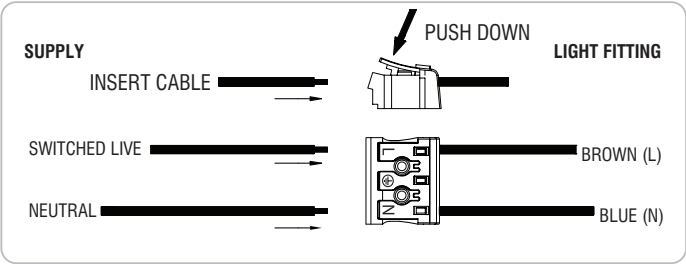


Wiring

Having correctly identified the wiring from your existing light fitting, pull the mains wire through the hole and connect to the quick fit connection block inside the product in the following way:



Check that...

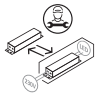
- You have correctly identified the wires.
- The connections are tight.
- No loose strands have been left out of the connection block.


Technical data


Supply Voltage: 220-240 V~, 50 Hz


Bulb Type: 10W LED module CCT, 3000K/4000K/6000K This product contains a light source of energy efficiency class **D**.


 Replaceable (LED only) light source by a professional


 Replaceable control gear by a professional

 Conformity with all relevant UKCA Directive requirements.

 Conformity with all relevant EC Directive requirements.

 The power supply is Double Insulated and does not require connection to an Earth circuit.


 Waste electrical products should not be disposed of with household waste. Please recycle where facilities exist. Check with your Local Authority or local store for recycling advice.

 This product is not suitable for dimming.

 This product is rated at IP65.

Care and Safety

We recommend cleaning with a soft dry cloth. Do not use solvents or abrasive cleaners as these could damage the finish. For your safety, always switch off the power supply before cleaning.

 This light source is protected by a shade. This part must be replaced immediately should the shade become cracked or damaged. This fitting must not be used without the shade in place.

For further information, please visit <https://www.lighting-info.co.uk/113565>

V1 26/09/2024  
UK Manufacturer: BH17 7BY  
EU Manufacturer: Brilliant AG,  
Brillantstrasse 1, D-27442 Gnarrenburg

saxby  
lighting

Instruction manual

# Avit CCT

113565



[www.saxbylighting.com](http://www.saxbylighting.com)

saxby  
lighting

Thank you for purchasing this light fitting. Please read the instructions carefully before use to ensure safe and satisfactory operation of this product. Please retain these instructions for future reference.

Warning

 This power supply is Double Insulated and does not require connection to an Earth circuit.

Please read these instructions carefully before commencing any work.

This unit must be fitted by a competent and qualified electrician.

Check the pack and make sure you have all the parts listed.

Install in accordance with the IEE Wiring regulations and current Building Regulations.

To prevent electrocution switch off at mains supply before installing or maintaining this fitting. Ensure other persons cannot restore the electrical supply without your knowledge. If you are in any doubt, please consult a qualified electrician.

This light fitting should be connected to a fused circuit.

If replacing an existing fitting, make a careful note of the connections.

Waste electrical products should not be disposed of with household waste. Please recycle where facilities exist. Check with your local authority or retailer for recycling advice.

Layout

Plan the desired layout of these fittings carefully, ensuring the cables will reach the distance between the junction box and the light fitting.

Avoid locating any cables in positions that would cause a hazard. Position cables and outdoor rated junction boxes (not supplied) away from areas where they may be at risk from being cut, trapped or damaged.

We recommend that you use H05RN-F specification cable (not supplied) which is an outdoor grade, rubber sheathed cable.

The mains supply cable must have a minimum cross sectional area of 1.0mm<sup>2</sup>.

Cables must be protected using suitable conduit or plastic trunking.

Installation

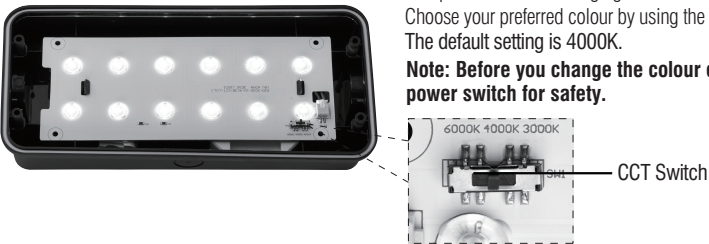
Existing fittings must be completely removed before installation of a new product. Before removing the existing fitting, carefully note the position of each set of wires.

Note that the switch is turned off before installation.

Ensure that the screws and cable entry points are sealed to maintain the IP rating of the product.

This product is color changing and can be either 3000K or 4000K or 6000K. Choose your preferred colour by using the CCT switch. The default setting is 4000K.

**Note: Before you change the colour every time, please turn off the power switch for safety.**



- Shut off the power.
- Loosen the screws on the lampshade with a screwdriver, then remove the screws and lampshade together.
- Push the both side clips of the fixed LED board inward with your hand, Loose the LED board and set it aside.
- Place the rear panel of the lamp on the designated wall and mark the location with a marker pen. Drill a 60mm deep hole in the wall with a Ø6mm drill bit and insert the expansion tube into the hole.
- Choose the entrance hole then use a Ø20mm hole opener to make holes on the side of the lamp then Install the waterproof plug into the entrance hole.
- Pull the wire through the hole then fix the rear panel to the wall with screws.
- Connect the cabels to the connection block refering to the wiring diagram.
- Fit back the LED board into the rear panel.
- Fit back the lampshade into the lamp.
- Replace fuse or circuit breaker and switch on. Your light is now ready for use.

